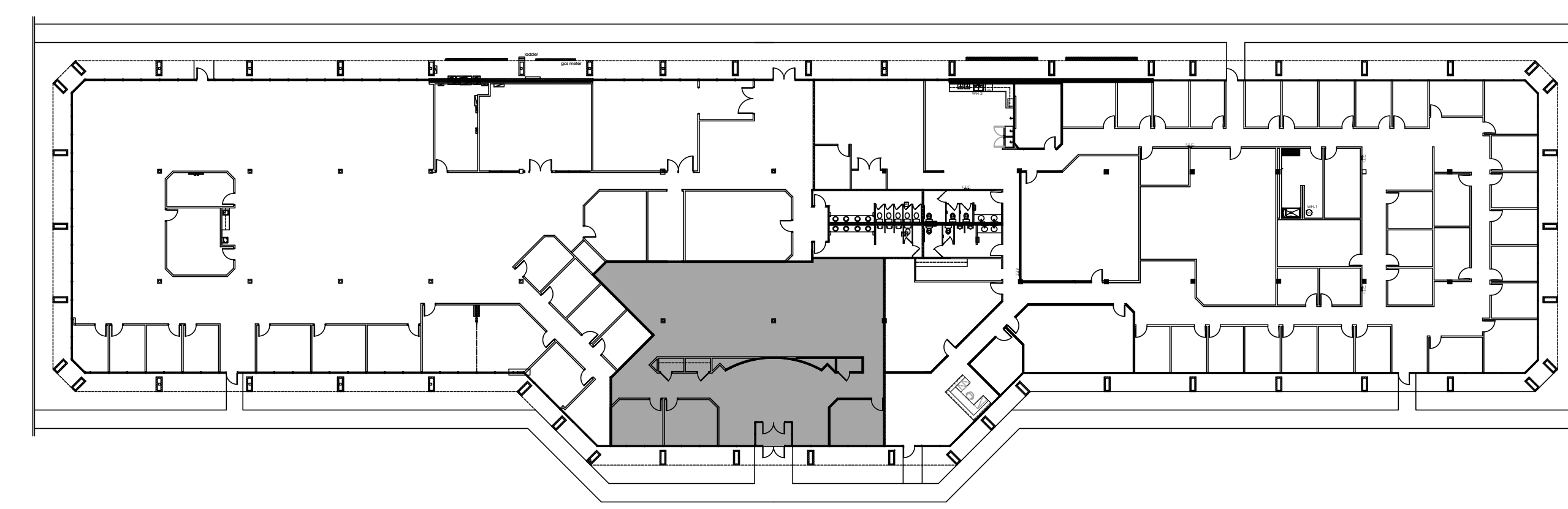
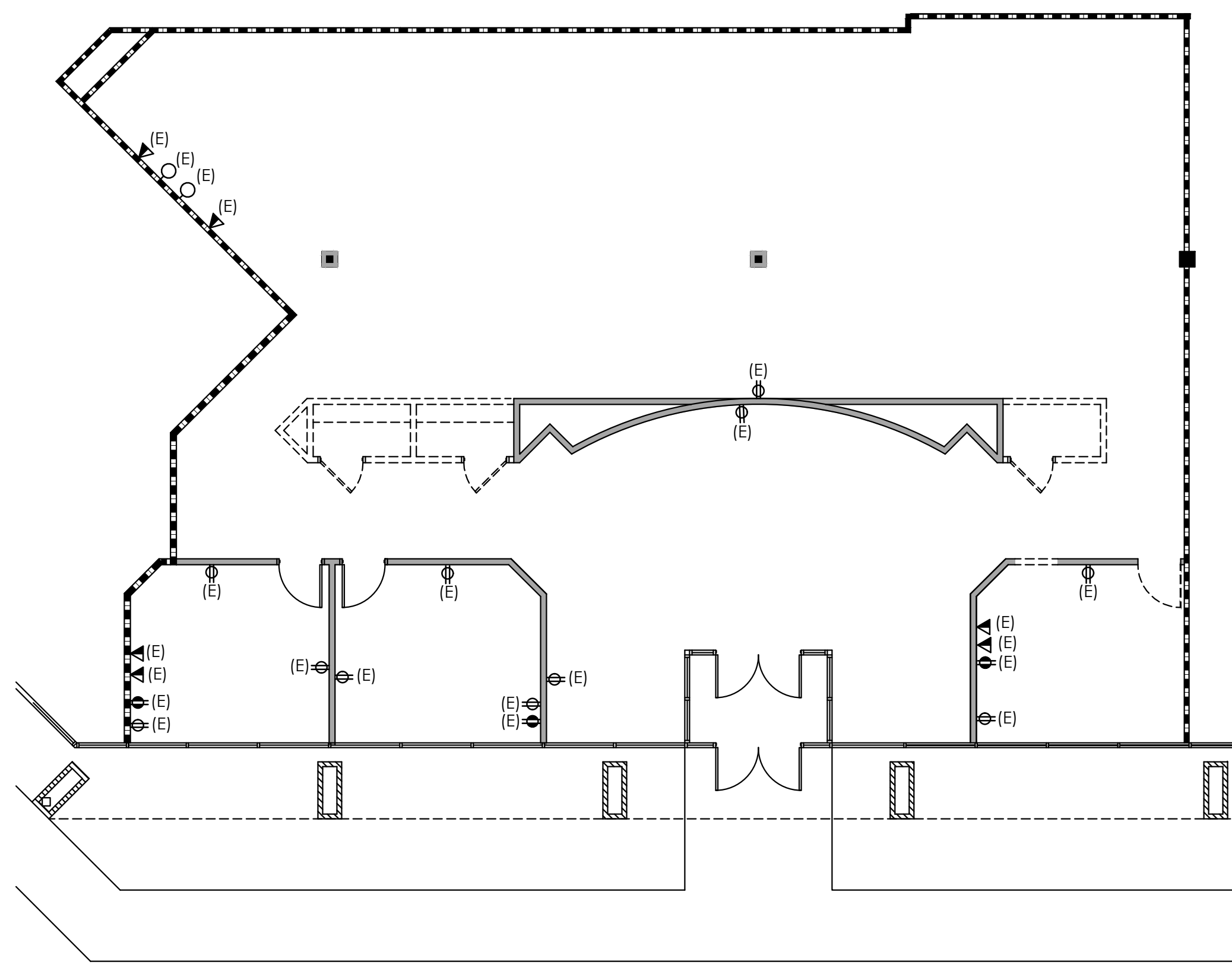


ISSUED FOR PRELIMINARY
PURPOSES ONLY.

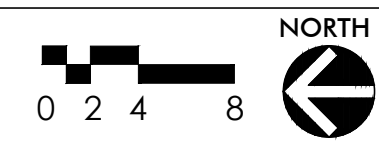
THESE DOCUMENTS ARE INCOMPLETE
AND MAY NOT BE USED FOR
REGULATORY APPROVAL, PERMITTING
OR CONSTRUCTION.

These drawings are assumed to be complete and final.
It shall be the tenant/client's responsibility to review and
bring in writing any design discrepancies to the
designers' attention. Any design changes will be at
additional expense. The designer shall not be held
responsible for city, state and federal code/regulation
authority's interpretations.

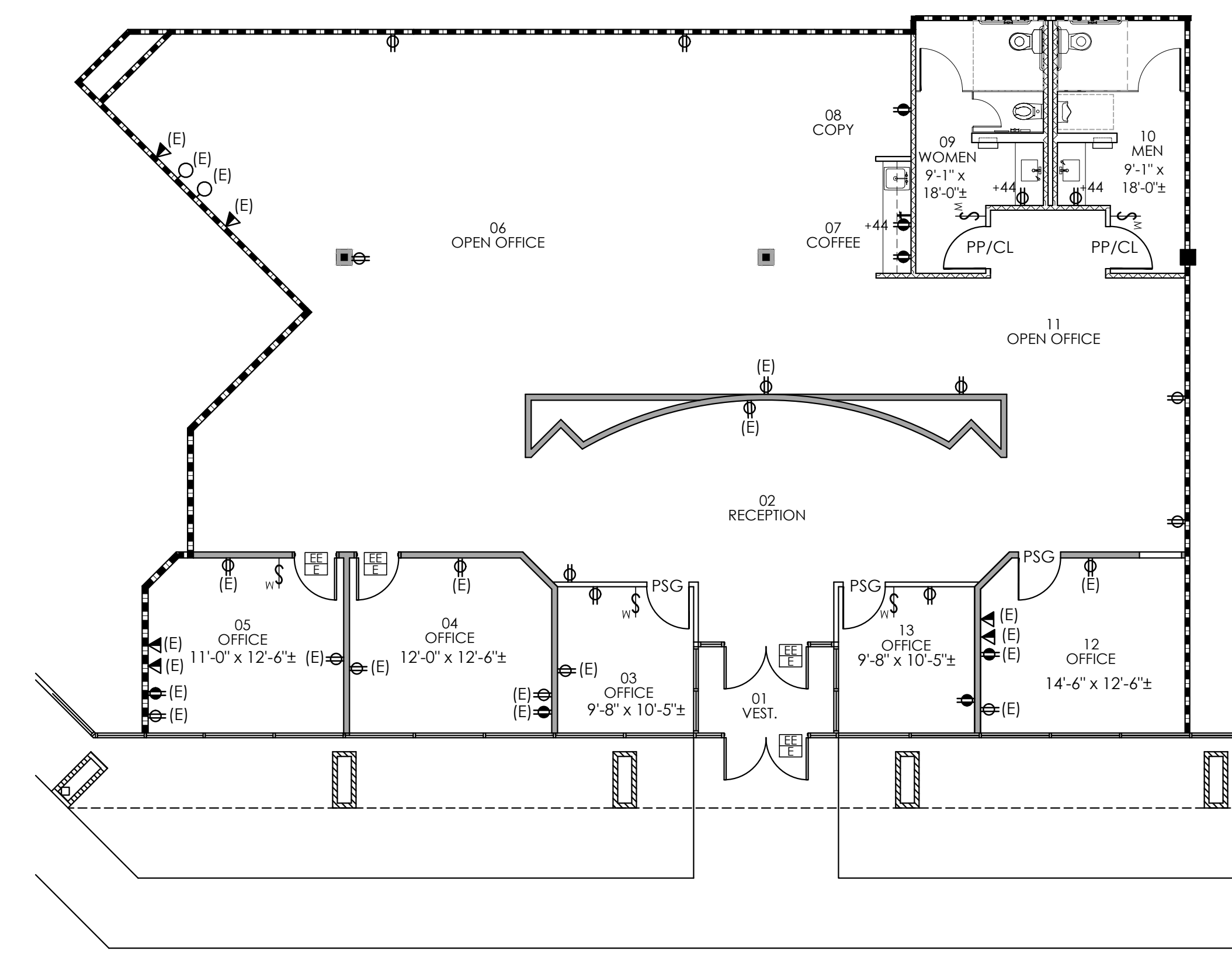
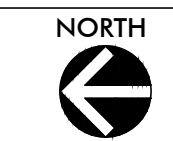
Approved: _____ Date: _____



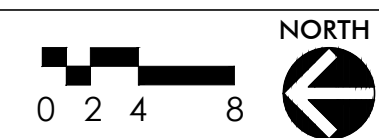
01 Demolition Plan
Scale: 1/8" = 1'-0"



03 Key Plan
Scale: 1/32" = 1'-0"



02 Architectural/Electrical Plan
Scale: 1/8" = 1'-0"



SCHEDULES
SPECIALTIES

FEC-1 FIRE EXTINGUISHER AND CABINET, LARSEN, VERTICAL DUO, SEMI RECESSED, WHITE. 2409 SERIES. COORDINATE WITH WALL THICKNESS.

PLUMBING

- WH-1 ELECTRIC WATER HEATER: RHEEM/RUIID OR EQUAL, MIN. 10 GAL. --COORDINATE SIZE BASED ON FIXTURES PROVIDED. LOCATION - BREAK ROOM
- SNK-1 SINGLE BOWL SINK @ BREAK ROOM, ADA COMPLIANT: ELKAY, LRAD-221965, 3 HOLE, 4" O.C., 6-1/2" DEEP FAUCET: AM. STD., MONTERREY 6409.170
- LAV-1 COUNTERTOP LAVATORY, AM. STD. CADET OVAL, 419.888. FAUCET: AM. STD. 6502.170
- WC-1 TANK-TYPE WATER CLOSET AMERICAN STANDARD, CHAMPION 4 RIGHT ELONGATED, 2002.014, LEVER ON WIDE SIDE OF STALL
- URN-1 URINAL FLUSH VALVE, AM. STD. WASHBROOK FLOWISE .5 GPF, 6590.501.

TOILET ACCESSORIES

- (A) TOILET PAPER DISPENSER, BOBRICK B-4388
- (B) GRAB BARS, BOBRICK B-6806
- (C) TOWEL DISPENSER/WASTE DISPENSER, 600 CT., BOBRICK B3944
- (D) MIRROR, BOBRICK B-165, 24" X 36"
- (E) SOAP DISPENSER, BOBRICK B-2111
- (F) PIPE WRAP, TRUEBRO, WHITE
- (G) ADA COMPLIANT ROOM SIGN
- (H) COAT HOOK, BOBRICK B-542
- (I) TOILET PARTITIONS, FLOOR MOUNTED W/ OH BRACE, BAKED ENAMEL METAL, LIGHT GREY.

CODE COMPLIANCE

CODES		EGRESS	
BUILDING	2012 IBC	73'	COMMON PATH OF EGRESS TRAVEL (75' MAX ALLOWED)
ELECTRICAL	2011 NEC	1	EXITS REQUIRED
FIRE SAFETY	2012 IFC	1	EXITS PROVIDED
MECHANICAL	2012 IMC		
PLUMBING	2012 IPC		
ENERGY	2012 IECC		
ACCESSIBILITY	2012 TAS		

FULLY FIRE SPRINKLERED - NO OCCUPANCY GROUP - BUSINESS
OCCUPANT LOAD
 BUSINESS 3631 S.F. / 100 = 37 OCCUPANTS
 TOTAL 37 OCCUPANTS

LEGENDS
GENERAL

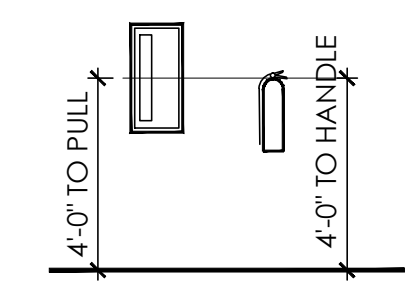
- 0000 ROOM NUMBER
- OFFICE ROOM NAME
- 01/A5 ELEVATION MARK
- 01/A5 SECTION MARK
- REVISION MARK
- REVISION CLOUD
- WATER LINE WITH SHUT-OFF VALVE
- FLOOR DRAIN
- WATER HEATER & DRAIN PAN
- F.E.C. FIRE EXTINGUISHER CABINET
- OCCUPANCY SENSOR
- EXHAUST FAN

PARTITIONS (REF. AN2)

- PARTITION MARK
- STUD WIDTH
- PARTITION TYPE
- EXISTING PARTITION TO REMAIN
- NEW PARTITION
- DEMOLISHED ITEMS
- SIDELIGHT/WINDOW
- DEMISING PARTITION WITH SOUND INSULATION (EXISTING)
- ONE HOUR PARTITION

DOORS AND GLAZING (REF. AN2)

- DOOR MARK
- DOOR TYPE
- FRAME TYPE
- HARDWARE SET



FIRE EXTINGUISHERS

WALL DEVICES

- DUPLEX OUTLET
- DEDICATED OUTLET, ORANGE
- FOURPLEX OUTLET
- DEDICATED FOURPLEX, ORANGE
- 220 VOLT OUTLET
- J-BOX WITH POWER
- VOICE/DATA PULL STRING & RING
- NOTES EXISTING ITEM
- +48 WALL DEVICE AT HEIGHT INDICATED A.F.F.

DOOR HARDWARE

- PP NEW PUSH PULL SET
- CL NEW CLOSER
- PSG NEW PASSAGE SET
- EE EXISTING DOOR, FRAME, AND HARDWARE TO REMAIN
- E

CHECKED BY: MM

PREPARED BY: MM/LW/JG

Project
SPEC SUITE

Location
Midway Commons
3424 Midcourt
Suite # T.B.D.
Carrollton, Texas

3,631 SF

Sheet Title
Preliminary Plan

Sheet Number © 2015

1.2