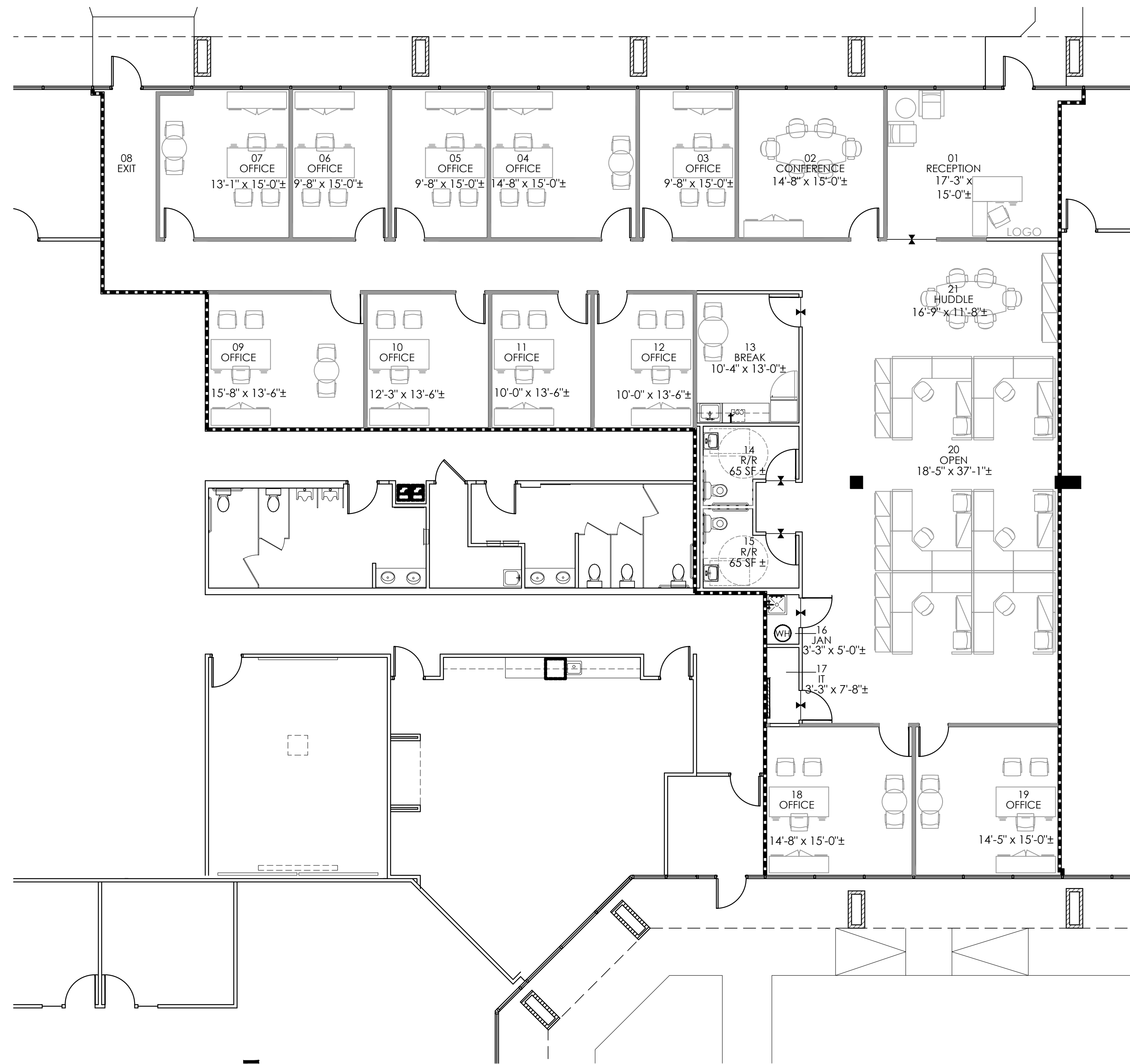


ISSUED FOR PRELIMINARY  
PURPOSES ONLY.

THESE DOCUMENTS ARE INCOMPLETE  
AND MAY NOT BE USED FOR  
REGULATORY APPROVAL, PERMITTING  
OR CONSTRUCTION.

These drawings are assumed to be complete and final.  
It shall be the tenant/client's responsibility to review and  
bring in writing any design discrepancies to the  
designers' attention. Any design changes will be at  
additional expense. The designer shall not be held  
responsible for city, state and federal code/regulation  
authority's interpretations.

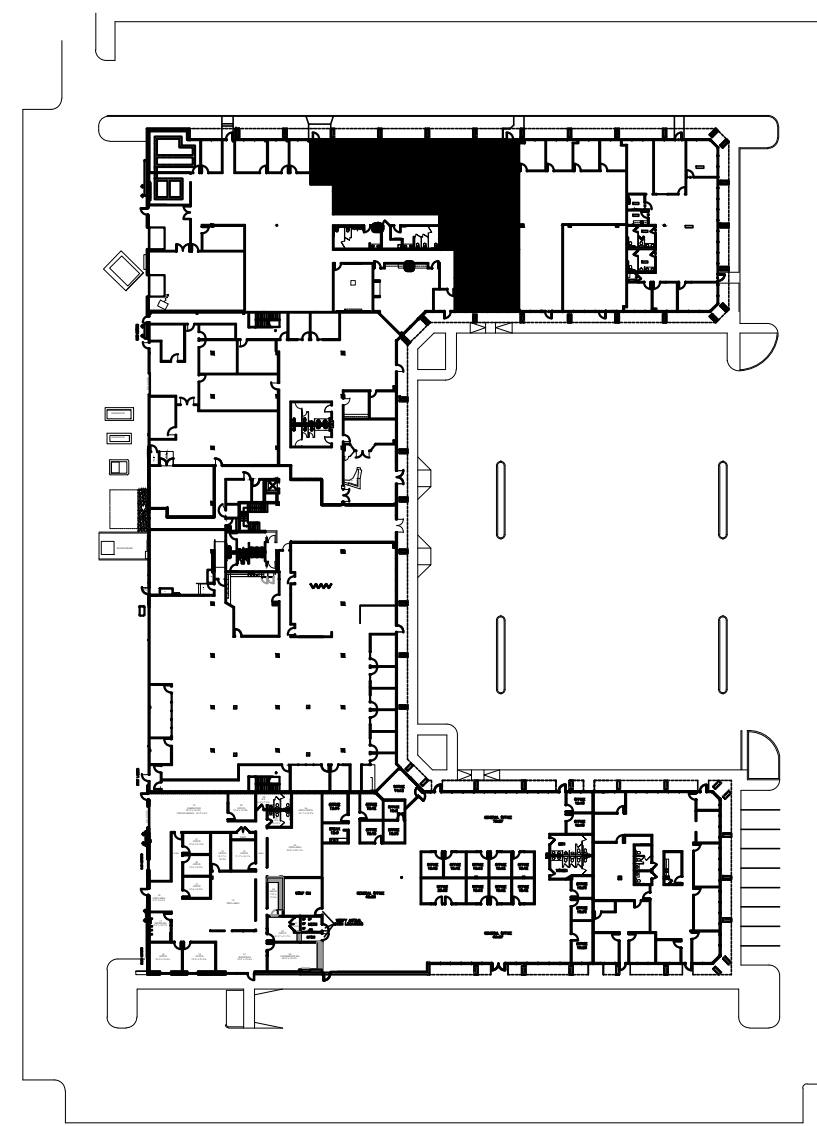
Approved: \_\_\_\_\_ Date: \_\_\_\_\_



**01 Preliminary Plan**  
Scale: 1/8" = 1'-0"



**KEY PLAN**



**CODE COMPLIANCE**

<b>CODES</b>	
BUILDING	2012 IBC
ELECTRICAL	2011 NEC
FIRE SAFETY	2012 IFC
MECHANICAL	2012 IMC
PLUMBING	2012 IPC
ENERGY	2012 IECC
ACCESSIBILITY	2012 TAS

**FULLY FIRE SPRINKLERED - YES**

**OCCUPANCY GROUP - BUSINESS**

<b>OCCUPANT LOAD</b>		
BUSINESS	4,452 S.F. / 100	= 45 OCCUPANTS
ASSEMBLY	220 S.F. / 15	= 15 OCCUPANTS
<b>TOTAL</b>	<b>4,672 S.F.</b>	<b>60 OCCUPANTS</b>

<b>EGRESS</b>	
YES	SPRINKLERED
100'	COMMON PATH OF EGRESS TRAVEL
71'	ACTUAL COMMON PATH OF EGRESS TRAVEL DISTANCE
2	EXITS REQUIRED
2	EXITS PROVIDED
126'	LONGEST DIAGONAL
42'	REQUIRED EXIT SEPARATION
87'	EXIT SEPARATION (ACTUAL)
50'	MAXIMUM DEAD END CORRIDOR (ALLOWED)
N/A'	MAXIMUM DEAD END CORRIDOR (ACTUAL)

**LEGEND  
GENERAL**

- EXISTING PARTITION
- NEW PARTITION
- DEMOLISHED ITEMS
- DEMISING PARTITION
- SIDELIGHT/WINDOW
- ONE HOUR PARTITION
- TWO HOUR PARTITION

THIS PLAN IS SUBJECT TO APPROVAL BY THE MUNICIPAL CODE AUTHORITIES.  
THESE DOCUMENTS ARE INCOMPLETE AND MAY NOT BE USED FOR  
REGULATORY APPROVAL, PERMIT OR CONSTRUCTION.  
ROOM SIZES ARE APPROXIMATE ONLY AND ARE NOT TO BE USED FOR FINAL  
DETERMINATION OF FURNITURE SIZES OR PLACEMENT.

For Review	07/31/2015
No. Issued	Date

Project  
**Spec Suite 105**

Location  
**Midway  
Commons**

**3410 Midcourt Road  
Suite 105  
Carrollton, Texas 75006**

RSF: 4583

Sheet Title  
**Preliminary  
Space Plan**

Sheet Number  
**1.0**

CHECKED BY: JMG

PREPARED BY: MEM